

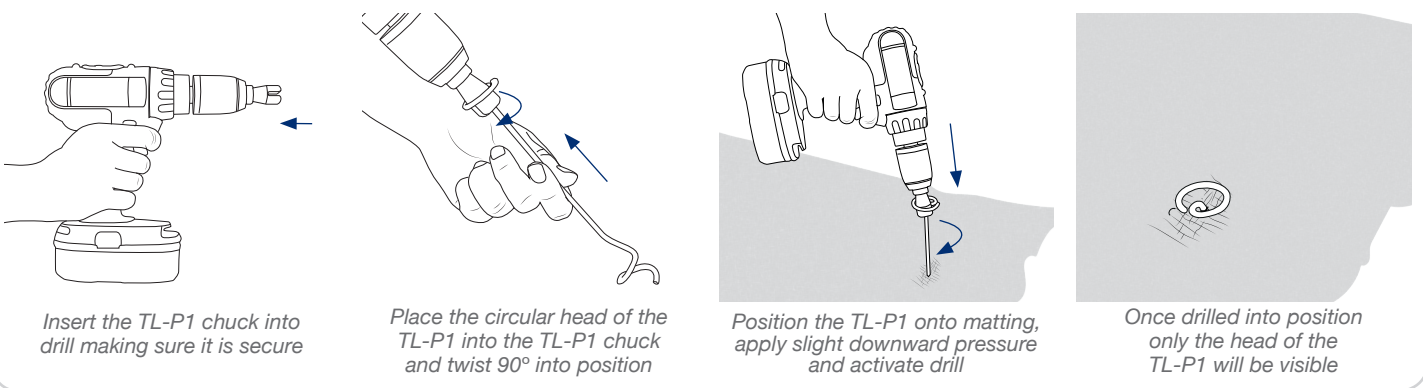
The new TL-P1 holds all types of erosion control and soil stabilisation blanket matting securely in place

FEATURES / BENEFITS

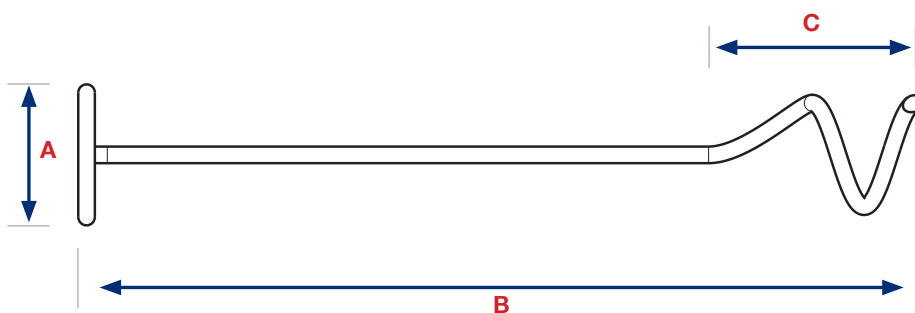
- Quick and easy to install with a standard electric drill
- Superior performance when compared to traditional straight pins, see comparable pin tests overleaf.
- Eliminates time & labour associated with replacing or reworking pins that have become loose or pulled out altogether
- The patent pending innovative design of the installation chuck allows the TL-P1 to be installed to full depth without damaging the mat
- Integrated top coil form eliminates the need for a washer, spreads the load and helps secure the matting in place



INSTALLATION



TECHNICAL SPECIFICATION



Dimension	Size (mm)
A	35
B	204
C	50

Gripple's policy is one of continuous development and innovation. We therefore reserve the right to alter specifications, etc. without notice.

CIV-PI-SSEC-ENG-TL-P1

www.gripple.com



Gripple Ltd | The Old West Gun Works | Savile Street East | Sheffield S4 7UQ
 Tel 0800 018 4264 Fax 0114 275 1155 email info@gripple.com