



Agrotextiles



Biodegradables



Geotextiles



Specialist



Wildlife



Living Walls &
Roofs



Accessories



GrassMat™ Supreme

GrassMat™ Supreme is a biodegradable textile, pre-sown with seed and fertilizer, which provides an easy method for effective vegetation restoration and erosion control on a wide variety of landscapes from lawns to steep slopes.

Its innovative construction traps seed and fertilizer securely and evenly within the mat so they cannot be disturbed during handling, transportation, installation and settlement (a common problem with previous blankets). Inside GrassMat™ Supreme, the seeds sprout and grow well, protected from washout and deprivation, to give excellent grass cover results.

Features/Benefits:

- Protects soil from stormwater run off
- Establishes vegetation on steep banks
- Fully biodegradable
- Biodegrades in 4-5 months
- Environmentally friendly
- Quick and easy to install
- Seed held in fibres to protect it against birds
- Option to customise seed mix
- Organic product

Guidance

- We suggest 150mm overlaps as standard practice
- We suggest 2.5 pins per m²

Standard Seed Mix

Low Maintenance Erosion Control:

- 55% Festuca rubra rubra (creeping red fescue)
- 20% Festuca rubra commutata (Chewing's fescue)
- 15% Festuca arundinacea (tall fescue)
- 5% Agrostis capillaris (common bent)
- 5% Lolium perenne (perennial rye-grass)

Ideal for stabilising embankments in a variety of landscaping situations. The binding growth habit and deep rooting penetration make this mixture very persistent and drought tolerant.

Custom mixes (including wildflower) are available subject to order quantity.

Application Categories: Surface Erosion Control

Hy-Tex (UK) Limited
Aldington Mill, Mill Lane,
Aldington, Ashford, Kent
TN25 7AJ

☎ 01233 720097
✉ sales@hy-tex.co.uk
🌐 www.hy-tex.co.uk
☎ 01233 720098





Agrotextiles



Biodegradables



Geotextiles



Specialist



Wildlife



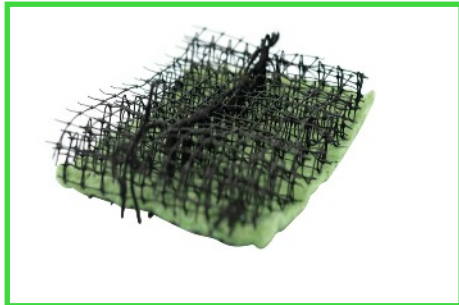
Living Walls &
Roofs



Accessories



GrassMat™ Supreme



GrassMat™ Supreme "R"

Before



After



GrassMat™ Supreme Usage Instructions

Seed is a live material. It's growth depends on various factors: the climate, the irrigation, the type of soil, etc. We suggest laying down GrassMat Supreme when the temperature is steadily higher than 8°-10°C and lower than 30°C. We also kindly suggest you follow the usage instructions listed below. We use only first grade components, yet it is not possible to guarantee a good result when inclement weather conditions occur, due to usage mistakes or during the grass cover on critical conditions.

- Remove any gravel and the pre-existing grass or vegetation by the roots, turn over the surface soil (the first 10 cm), and work free of clods, rubbish and large stones then smoothly grade the soil.
- Lay GrassMat Supreme down without stretching it, but placing it carefully, making it sure it adheres fully to the ground (this can be help by also watering).
- On scarps and slopes, secure GrassMat Supreme on the top of the slope, anchoring it in a small, a few centimetres deep, cutting if necessary, dug approx. 50 cm over the crest.
- Unroll the biotextile making sure that it remains attached to the ground and secure it using pegs or U-shaped staples, placed at a variable distance, depending on the inclination and on the location and terrain features. On average, 2.5 pin/m² of biotextile.
- It is strongly recommended to also COVER GRASSMAT SUPREME WITH A LIGHT DRESSING OF STERILE LOAM OR SAND.
- GrassMat Supreme can be easily shaped using simple domestic scissors.
- Water briefly and regularly throughout the day (to keep the blanket damp) during the first 25-30 days until the grass surface has completely settled.
- Cut it for the first time when it reaches 10-15 cm.
- WHEN YOU WORK ON POOR SUBSTRATES, BACKFILL WITH AT LEAST 30 CM OF FERTILE COMPOST BEFORE LAYING FABRIC.
- GrassMat Supreme may be laid down on either side.
- GrassMat Supreme is a totally natural product, 100% biodegradable in a period which can vary from four to five months, depending on the ground type and on the environmental and climatic conditions.

On reinforced soil slopes

- Lay GrassMat Supreme under the formwork and any geogrids, arranging it so a 10-15 cm flap is created on the bottom and on the top of the formwork.
- Pierce the biotextile to install the anchor ties.
- Before placing the filling soil, approx. 30 cm of fertile compost should be laid down on the outside and gently compressed.
- Carry on the setting up of the reinforced soil as usual.
- According to the temperature and the daytime lighting, water frequently until the grass surface has completely settled.
- Cut the grass for the first time when it has reached 10-15 cm.

Feature	GrassMat™ Supreme	GrassMat™ Supreme "R"
Material	Cellulose fibre and seed	Cellulose fibre and seed bonded to 3 dimensional UV stabilised pp geomat
Colour	Green (batch shades may vary)	Green + Black
Tensile Strength	md 0.98kN/m, cd 0.60kN/m	md 10kN/m, cd 15kN/m
Elongation	md 42.61%, cd 125.34%	md 20%, cd 15%
Thickness	3mm	20mm
Additional Materials	Granular fertilizers and conditioners	Granular fertilizers and conditioners
Total Weight	250g/m ²	480g/m ²
Roll Size	150m ² (2.15m x 69.80m)	66m ² (2.20m x 30.00m)

Application Categories: Surface Erosion Control

Hy-Tex (UK) Limited
Aldington Mill, Mill Lane,
Aldington, Ashford, Kent
TN25 7AJ

☎ 01233 720097
✉ sales@hy-tex.co.uk
🌐 www.hy-tex.co.uk
📠 01233 720098

