

"Embracing Trees"

Eco-Haven™ Original

Soil Biodegradable
Tree Guards, Shrub Shelters,
Vole Guards and Coppice Shelters



MADE IN BRITAIN



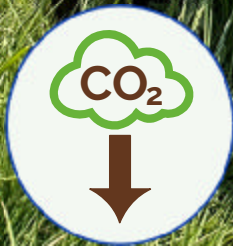
No Micro Plastics



No GM Crops



Soil Biodegradable



Carbon Negative



Sustainable



Plant Based



Durable

SCAN ME
TO FIND OUT MORE



Protecting the Environment
Since 1991





Agrotextiles



Biodegradables



Geotextiles



Specialist



Wildlife



Living Walls & Roofs



Accessories



Versatile Stacking Modular Tree and Shrub Protection

Eco-Haven™ Original is supplied as flat sheets that are easily formed into tubes using integrated securing tabs.

Supplied in two widths, to form 10cm diameter tree guards and 15cm shrub shelters, and two heights, 60 and 90cm.

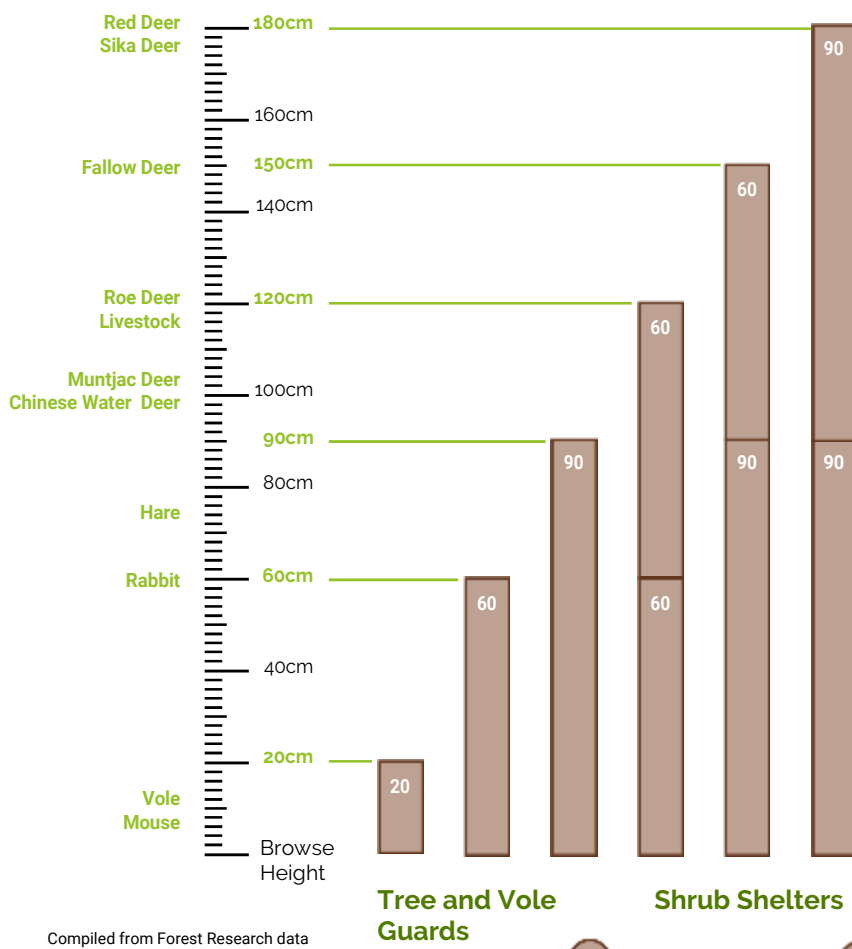
The innovative, interlocking, modular construction provides the freedom to also create 120, 150 and 180cm high tubes, from just these two tube heights, without the risk of displacement and breaches.

Vole Guard

A smaller 20cm x 10cm diameter version is also available to form vole guards.

Protection Height Recommended

Eco-Haven™ Original Module Height Combinations



Compiled from Forest Research data

10

15

Custom sizes and designs also available

Application Categories: Horticulture, Agriculture and Equestrian, Tree Protection

Hy-Tex (UK) Limited
Aldington Mill, Mill Lane,
Aldington, Ashford, Kent
TN25 7AJ

01233 720097
sales@hy-tex.co.uk
www.hy-tex.co.uk
01233 720098





Agrotextiles



Biodegradables



Geotextiles



Specialist



Wildlife



Living Walls &
Roofs



Accessories

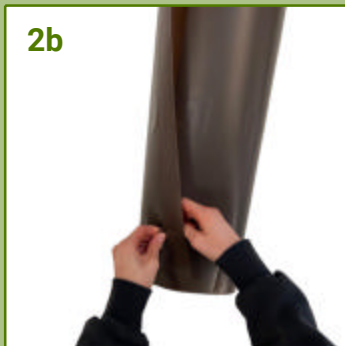
Eco-Haven™ Original Tree and Shrub Tube Assembly



1



2a



2b



3a



3b



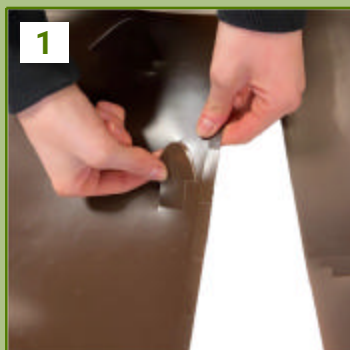
3c

1. The tree guard should be assembled shiny side facing up with the toothed edge at top so the 3 triangular tabs are on the right hand side .

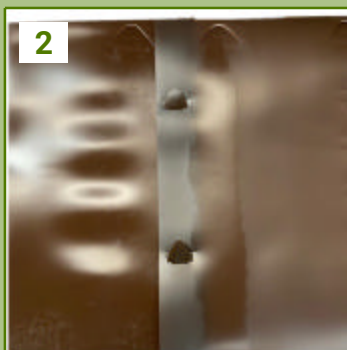
2. Bring the sides of the tree guard together to form a tube and overlap so the side with the triangular tabs lays under the side with the slots.

3. Push the tabs through the adjacent slots, pull them fully through so the notches lock them in place to form the finished tube.

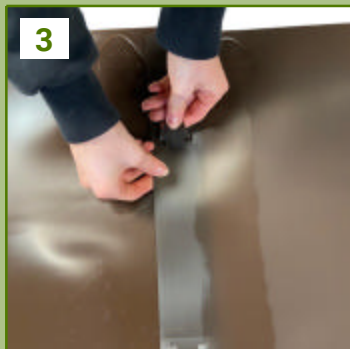
Eco-Haven™ Original Tree and Shrub Tube Stacked Tube Assembly



1



2



3



4

The stacking design allows you to create 60, 90, 120, 150 and 180cm high tubes from just 2 tube heights.

1. For guards taller than 90cm attach a combination of 60 and/or 90cm tree guards together.

2. Start by placing the sheets matt side facing up and slightly overlap the upper sheet over the lower one.

3. Push the 2 triangular tabs on the top toothed edge of the lower sheet up through the bottom slots of the upper sheet.

4. Assemble the pair of tree guards as per tube assembly guidelines above.

Application Categories: Horticulture, Agriculture and Equestrian, Tree Protection

Hy-Tex (UK) Limited
Aldington Mill, Mill Lane,
Aldington, Ashford, Kent
TN25 7AJ

01233 720097
sales@hy-tex.co.uk
www.hy-tex.co.uk
01233 720098





Agrotextiles



Biodegradables



Geotextiles



Specialist



Wildlife



Living Walls & Roofs



Accessories

Eco-Haven™ Original Tree and Shrub Tube Post Attachment



1. Once the tree guard is assembled, detach the cable ties from the edge of the tube (1 pair for the 60cm and 2 pairs for the 90cm tubes)
2. Thread the cable ties through the top and bottom tab slots for the 60cm tube and all three tabs for the 90cm tubes
3. Secure the tie around the support post by sliding the pointed end through the slotted end of the cable tie and tighten.

Eco-Haven™ Original Tree and Shrub Tube Ventilation Adjustment



1. As an option, to allow more light and air to reach the sapling, bend the middle row of cut triangles outwards.



Eco-Haven™ Original

Assembly Guidelines

Application Categories: Horticulture, Agriculture and Equestrian, Tree Protection

Hy-Tex (UK) Limited
Aldington Mill, Mill Lane,
Aldington, Ashford, Kent
TN25 7AJ

☎ 01233 720097
✉ sales@hy-tex.co.uk
🌐 www.hy-tex.co.uk
📞 01233 720098





Agrotextiles



Biodegradables



Geotextiles



Specialist



Wildlife

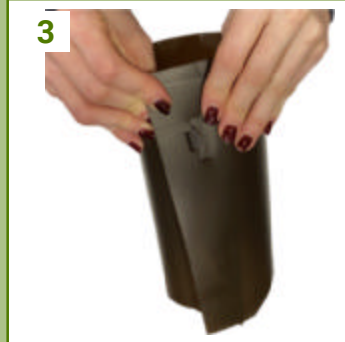


Living Walls & Roofs



Accessories

Eco-Haven™ Original Vole Guard Assembly



1. Begin with the shiny side facing up
2. Curve material round to form a tube, so the matte surface is on the outside
3. Push the tab through its corresponding slot from the inside
4. Pull through and slot in place so that it is secured
5. Repeat step 3 and 4 on second tab
6. Both tabs should be fixed in place and visible from the outside of the tube
7. Assembled Vole Guard, base features talons to aid firming into ground



NEW

Eco-Haven™ Original Coppice Guard

Until now protecting coppiced trees from grazing animals has been challenging and expensive as existing tree guards do not accommodate the larger diameter tree stools and using wire fences is expensive. Eco-Haven™ Original coppice guard has therefore been designed with interlocking sections to form guards in multiples of 1.80m girth.



Application Categories: Horticulture, Agriculture and Equestrian, Tree Protection

Hy-Tex (UK) Limited
Aldington Mill, Mill Lane,
Aldington, Ashford, Kent
TN25 7AJ

☎ 01233 720097
✉ sales@hy-tex.co.uk
🌐 www.hy-tex.co.uk
☎ 01233 720098

