



Grass Reinforcement and Porous Paving



Ground Engineering



Landscaping and Weed Control



Living Walls



Sediment Pollution Control



Tree Protection



Surface Erosion Control



Water Margin Protection



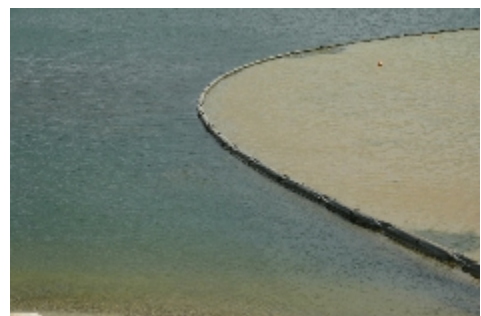
Horticulture, Agri and Equestrian



Wildlife Protection



Hy-Tex (UK) Ltd E-Brochure 2024



Phone: 01233 720097



Email: sales@hy-tex.co.uk



Hy-Tex (UK) Ltd
Aldington Mill, Mill Lane, Aldington,
Kent, Ashford, TN25 7AJ



Protecting The Environment Since 1991



Hy-Tex (UK) Limited is an established family business founded in 1991

Hy-Tex (UK) Limited is an independent family run business, operating for over 33 years. During this time we have built a team of long term employees, with an extensive knowledge base and brilliant work ethic. We offer a wide range of biodegradables and geotextiles to help protect the environment, particularly specialising in silt and erosion control.

The Company

Hy-Tex (UK) Limited is an established independent family run business, founded in 1991 on an in-depth knowledge of both technical and biodegradable textiles. Hy-Tex (UK) Ltd is run by David Poole (Director) and step-son Ryan Markham (Sales Manager), surrounded by an incredible and supportive team. With our family ethics at heart, all employees are treated as equals and every person's input fairly valued.

Whilst being a supply only company, we can offer general advice based on our 33 years of experience, and are always more than willing to help our customer where we can. To help others grow their knowledge and understand best practices, online webinars are now offered completely free of charge at our customers chosen date and time.

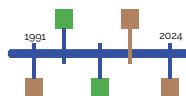
We are a leading direct and merchant supplier, with over 20,000ft² of dedicated storage located in Ashford, Kent. Hy-Tex (UK) Ltd has considerable experience servicing contracts and can offer a wide range of products for prompt delivery throughout the UK via our carrier networks, with next day services available on many of our products, along with special requirement deliveries such as FORS and flatbed vehicles as well as hiab, tail lift and moffett unloads.

The Products

Our products now consist of a wide variety, ranging from; erosion control meshes (biodegradable and permanent), silt fences, weed and root barriers, drain protection, dewatering bags and much more. We only work with highly reputable and responsible manufacturers to ensure we provide the highest quality of products to our customers.

Hy-Tex (UK) Ltd has developed an enviable reputation for providing quality products at competitive rates, supported by a friendly, efficient service and a comprehensive understanding of the materials and their applications. Consistent growth, long-term customer loyalty, a portfolio of prestigious projects and BS EN ISO 9001 quality assurance accreditation reflect this continual commitment to our clients.

Want to learn more about how we got to where we are, click our history timeline icon below.



Phone: 01233 720097



Email: sales@hy-tex.co.uk



Hy-Tex (UK) Ltd
Aldington Mill, Mill Lane, Aldington,
Kent, Ashford, TN25 7AJ





Contents

This E-Brochure is designed to be interactive in every way, this allows yourself to move around the document at ease and with speed. Please click the application icon below to be taken to the application of interest, or either start to scroll through our products from the next page - the choice is yours!

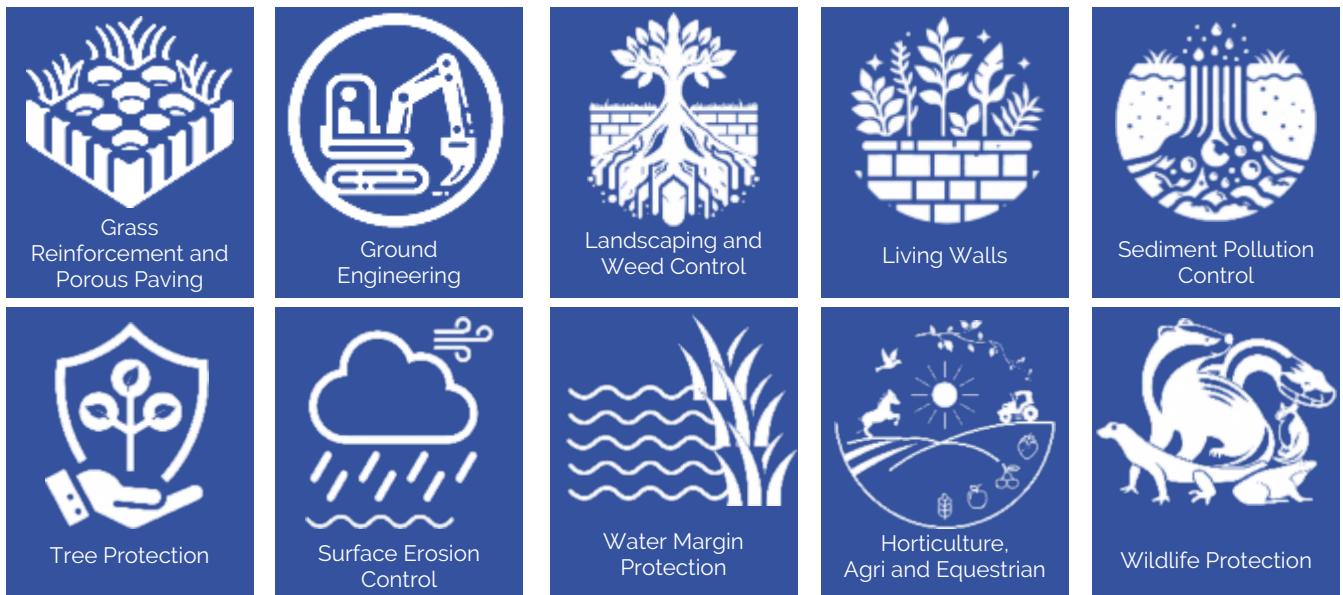
The application icons appear at the top of every page, so you can click these where ever you are.

Our Hy-Tex logo appears on every page, when clicked, it will take you to our website.

All icons found in our footer will take you to the corresponding application.

You will also find the following under every product 'To enquire or read more about this product click here'. To find out more about the product click 'here' and you will be taken to our website, where you can read more, download data sheets and make enquiries.

↓ **Click an application icon to get started** ↓



Some key products below, if you wish to skip to:

Terrastop Silt Fence

Sedimat

Ecotex

Root Barrier C3

CoirMesh

Ecofender Newt Fence

Ultra Dewatering Bags

Jute Soil Saver

Ecotex Tree Mats



Phone: 01233 720097



Email: sales@hy-tex.co.uk



Hy-Tex (UK) Ltd
Aldington Mill, Mill Lane, Aldington,
Kent, Ashford, TN25 7AJ





Phone: 01233 720097



Email: sales@hy-tex.co.uk



Hy-Tex (UK) Ltd
Aldington Mill, Mill Lane, Aldington,
Kent, Ashford, TN25 7AJ





Grass Reinforcement and Porous Paving



Ground Engineering



Landscaping and Weed Control



Living Walls



Sediment Pollution Control



Tree Protection



Surface Erosion Control



Water Margin Protection



Horticulture, Agri and Equestrian



Wildlife Protection

Hy-Pave Dura porous cellular pavers are strong, interlocking, plastic tiles used to create permeable reinforced grassed or gravel areas for a variety of applications. Each plastic tile is made from 100% recycled HDPE and has a low carbon footprint.



Features/Benefits

- Load bearing capacity up to 160 tonnes/m²
- Vehicle compression strength of 20 tonnes axle loading (meets DIN 1072 standard).
- Manufactured from recycled polymer
- Pavers filled with grass or gravel are SUDS source control compliant
- 3mm wall thickness for reliable performance
- Designed to resist lateral movement, improve traction and allow expansion and contraction
- Made from 100% Recycled HDPE

To enquire or read more about this product click [here](#)

Hy-Pave Heavy is a strong versatile ground paver tile designed for HGV use. The interlocking pavers can withstand weight of up to 40 tonnes and can be filled with either grass or gravel infill.



Features/Benefits

- Designed for use with HGV Traffic and textured surface for improved grip
- High shear strength reduces limitations whilst accelerating, braking and turning
- Easy to install and maintain and reduces sub base depths
- Cost effective alternative to concrete and tarmac surfaces
- Sympathetic to the natural environment and wheelchair regulations compliant
- Ideal for carparks, hardstandings, footpaths & verges, pedestrian areas, bridge abutments and access roads.

To enquire or read more about this product click [here](#)



Phone: 01233 720097



Email: sales@hy-tex.co.uk



Hy-Tex (UK) Ltd
Aldington Mill, Mill Lane, Aldington,
Kent, Ashford, TN25 7AJ





Grass Reinforcement and Porous Paving



Ground Engineering



Landscaping and Weed Control



Living Walls



Sediment Pollution Control



Tree Protection



Surface Erosion Control



Water Margin Protection

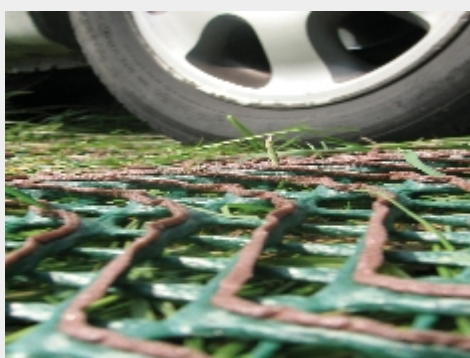


Horticulture, Agri and Equestrian



Wildlife Protection

The **GrassMesh™** range of robust, extruded, polyethylene meshes provide a discreet method to improve wear resistance and reinforce grass areas used by vehicles and/or pedestrians, whilst maintaining their appearance.



Features/Benefits

- Robust, extruded polythene mesh
- Can support HGV's (Flex 1800)
- Preserves grass parking areas
- UV stabilised and rot proof
- Improved slip resistance (33% better than other grass protection meshes on the market)
- Ideal for emergency access routes
- Numerous grades allow for individual budgets to be catered for

To enquire or read more about this product click [here](#)

Our **RubbaGrass®** Matting range is high quality and affordable, used typically for outdoor play areas and footpaths.



Features/Benefits

- Highly versatile
- Excellent resistance and durability
- Provides a safe and comfortable walking surface
- Slip resistant
- Superior safety benefits
- Resists moderate winds and extreme weather conditions
- Tested to BS EN1177:2015

To enquire or read more about this product click [here](#)



Phone: 01233 720097



Email: sales@hy-tex.co.uk



Hy-Tex (UK) Ltd
Aldington Mill, Mill Lane, Aldington,
Kent, Ashford, TN25 7AJ



Protecting The Environment Since 1991



Phone: 01233 720097



Email: sales@hy-tex.co.uk



Hy-Tex (UK) Ltd
Aldington Mill, Mill Lane, Aldington,
Kent, Ashford, TN25 7AJ





The Hy-Tex **GeoMat™ range of three dimensional, synthetic, cusped erosion control geomats are used to provide permanent reinforcement to the grass root matrix for permanent surface erosion protection.**



Features/Benefits

- Long term erosion control
- Tough, yet flexible
- Promotes vegetation establishment
- Permanent protection
- Allows roots to intertwine and bind to the mat

To enquire or read more about this product click [here](#)

A three-dimensional **MultiMat™ which, due to its flexibility, is easy to place on both the bed and banks of the dry canal.**



Features/Benefits

- Flexible
- Allows vegetation to anchor its roots to the three dimensional structure
- Help prevent soil erosion
- Proven history

To enquire or read more about this product click [here](#)



Phone: 01233 720097



Email: sales@hy-tex.co.uk



Hy-Tex (UK) Ltd
Aldington Mill, Mill Lane, Aldington,
Kent, Ashford, TN25 7AJ





Hy-Tex are the UK agent for the Terralys™ range of woven polypropylene tape geotextiles. These fabrics are used in ground engineering to provide separation, reinforcement, stabilisation and filtration.



Features/Benefits

- Multiple grades of material
- Prevents intermixing of materials
- Reduces the amount of costly aggregate
- Efficient filtration that improves long term performance
- Increases ground stability by distributing and supporting loads
- Typical application include railways foundations, french drains, horse menages and soakaways
- Woven separation geotextile with consistent properties
- CE marked

To enquire or read more about this product click [here](#)

DuPont™ Plantex® Platinum is resistant to the most aggressive weeds. Whether its Japanese knotweed, couch grass, reed, giant reed, giant hogweed, marestalk, horsetail, bamboo or Himalayan balsam, Plantex® Platinum will deliver the resistance required.



Features/Benefits

- Delivers reliable protection against most aggressive weeds
- Outstanding tensile strength
- Horizontal application only
- Easy & fast installation
- Enhanced manufacturing technology for even greater protection
- An ecologically friendly solution, as the fabric is permeable to water and air
- A low-cost alternative to mechanical treatment or soil replacement

To enquire or read more about this product click [here](#)



Phone: 01233 720097



Email: sales@hy-tex.co.uk



Hy-Tex (UK) Ltd
Aldington Mill, Mill Lane, Aldington,
Kent, Ashford, TN25 7AJ





Root Barrier C3 is a highly regarded flexible, reinforced barrier designed to protect structures and services from root damage and control the spread of invasive plants such as Japanese Knotweed, Hogweed and bamboo.



Features/Benefits

- High puncture resistance (4,500N [EN ISO 12236])
- Extremely flexible
- Multiple roll sizes to cater to all needs
- CE marked
- 50 year life expectancy
- Effective barrier against Japanese Knotweed, Hogweed and other invasive weeds
- Triple coated and twin reinforced layers thermally bonded
- Tough and durable
- Passed root test (DD CEN/TS 14416:2005)

To enquire or read more about this product click [here](#)

Root Barrier Lapping Tape is a self-adhesive bitumen based membrane used to securely seal Root Barrier C3 overlaps.



Features/Benefits

- Weather and water proof
- Highly adhesive
- Tough and durable

To enquire or read more about this product click [here](#)



Phone: 01233 720097



Email: sales@hy-tex.co.uk



Hy-Tex (UK) Ltd
Aldington Mill, Mill Lane, Aldington,
Kent, Ashford, TN25 7AJ





Hycell™ is a cellular matrix of interconnecting polymer strips that form pockets to locate and strengthen the fill material. The polymer strips confine the filling material and significantly improve tensile strength.



Features/Benefits

- Forms pockets to locate and strengthen the fill material
- Cellular matrix of interconnecting polymer strips
- Protects vegetation
- Makes it possible to reduce foundation stone thickness by up to 50%
- Life expectancy of 120 years
- Tested in accordance with BSEN 964-1
- Tested in accordance with BSEN ISO 13426-1-2003

To enquire or read more about this product click [here](#)

CoirFence™ is a system designed for easy creation of retaining geocells, and stabilisation fencing, on embankments where top soil is vulnerable to slippage during vegetation establishment.



Features/Benefits

- Fully biodegradable geocell
- Soil retention
- Stabilises soil on embankments
- Reduces stormwater runoff
- Traps and filters sediment
- Environmentally friendly
- Easy to install

To enquire or read more about this product click [here](#)



Phone: 01233 720097



Email: sales@hy-tex.co.uk



Hy-Tex (UK) Ltd
Aldington Mill, Mill Lane, Aldington,
Kent, Ashford, TN25 7AJ



Protecting The Environment Since 1991



Phone: 01233 720097



Email: sales@hy-tex.co.uk



Hy-Tex (UK) Ltd
Aldington Mill, Mill Lane, Aldington,
Kent, Ashford, TN25 7AJ





Grass Reinforcement and Porous Paving



Ground Engineering



Landscaping and Weed Control



Living Walls



Sediment Pollution Control



Tree Protection



Surface Erosion Control



Water Margin Protection



Horticulture, Agri and Equestrian



Wildlife Protection

Ecotex - The first professional grade, weed control membrane made purely from organic material that is fully compostable, has a low carbon footprint and is naturally fire resistant is now available in the UK exclusively from Hy-Tex.



Features/Benefits

- Organic weed suppression
- Fully biodegradable
- Breaks down in 3 years or more
- Fire resistant
- Plastic free
- Effective weed control
- No chemicals - made from PLA with added hemp
- Strong and robust
- Low carbon footprint
- Environmentally friendly

To enquire or read more about this product click [here](#)

Hy-Tex Covertex™ ground cover is an extremely versatile landscaping and horticultural fabric for long-term weed control, moisture conservation and separation.



Features/Benefits

- Long term weed control
- High degree of UV stabilisation (Minimum 7 year life expectancy)
- High performance & easy to use
- Superior weave quality
- Excellent drainage
- Helps maintain soil warmth
- Suppresses weeds allowing plants/trees to establish

To enquire or read more about this product click [here](#)



Phone: 01233 720097



Email: sales@hy-tex.co.uk



Hy-Tex (UK) Ltd
Aldington Mill, Mill Lane, Aldington,
Kent, Ashford, TN25 7AJ





Root Barrier C3 is a highly regarded flexible, reinforced barrier designed to protect structures and services from root damage and control the spread of invasive plants such as Japanese Knotweed, Hogweed and bamboo.



Features/Benefits

- High puncture resistance (4,500N [EN ISO 12236])
- Extremely flexible
- Multiple roll sizes to cater to all needs
- CE marked
- 50 year life expectancy
- Effective barrier against Japanese Knotweed, Hogweed and other invasive weeds
- Triple coated and twin reinforced layers thermally bonded
- Tough and durable
- Passed root test (DD CEN/TS 14416:2005)

To enquire or read more about this product click [here](#)

Root Barrier Lapping Tape is a self-adhesive bitumen based membrane used to securely seal Root Barrier C3 overlaps.



Features/Benefits

- Weather and water proof
- Highly adhesive
- Tough and durable

To enquire or read more about this product click [here](#)



Phone: 01233 720097



Email: sales@hy-tex.co.uk



Hy-Tex (UK) Ltd
Aldington Mill, Mill Lane, Aldington,
Kent, Ashford, TN25 7AJ





DuPont™ Plantex® Platinum is resistant to the most aggressive weeds. Whether its Japanese knotweed, couch grass, reed, giant reed, giant hogweed, mareetail, horsetail, bamboo or Himalayan balsam, Plantex® Platinum will deliver the resistance required.

Features/Benefits



- Delivers reliable protection against most aggressive weeds
- Outstanding tensile strength
- Horizontal application only
- Easy & fast installation
- Enhanced manufacturing technology for even greater protection
- An ecologically friendly solution, as the fabric is permeable to water and air
- A low-cost alternative to mechanical treatment or soil replacement

To enquire or read more about this product click [here](#)

DuPont™ Plantex® Platinum Tape has a high immediate tack and excellent adhesion onto Plantex® weed control products, especially Plantex® Platinum and Plantex® Platinum Solar.

Features/Benefits



- Used to seal laps between joints
- The sealing tape must be applied to a clean, dry, smooth and dust-free surface
- The quality and the characteristics of the materials remain unaltered for a long period of time.
- Double-Sided

To enquire or read more about this product click [here](#)



Phone: 01233 720097



Email: sales@hy-tex.co.uk



Hy-Tex (UK) Ltd
Aldington Mill, Mill Lane, Aldington,
Kent, Ashford, TN25 7AJ





Gripple TL P1 Pin - The revolutionary new fixing pin designed to hold all types of turf reinforcement matting, erosion blankets, geotextiles and landscaping fabrics.

Features/Benefits

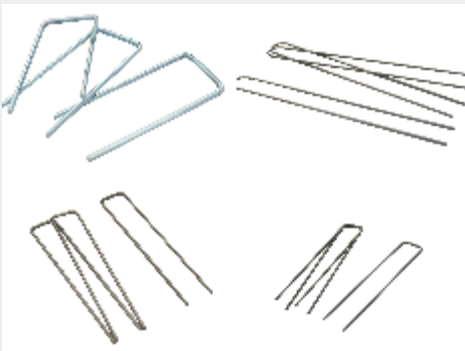


- Up to 10x quicker to install
- Superior pull out performance
- Reduced risk of loosening

To enquire or read more about this product click [here](#)

We supply a wide range of **metal fixing pins** to reliably anchor our fabrics and meshes in diverse ground conditions.

Features/Benefits



- Wide range of sizes and grades
- High quality steel

To enquire or read more about this product click [here](#)



Phone: 01233 720097



Email: sales@hy-tex.co.uk



Hy-Tex (UK) Ltd
Aldington Mill, Mill Lane, Aldington,
Kent, Ashford, TN25 7AJ





We supply two types of fully biodegradable pegs, the **Eco-Peg™**, which is made using a unique bio-polymer compound; and our **WoodPeg timber "T" peg**.

Features/Benefits

Eco-Peg

- Soil Biodegradable
- Recycled polymer
- Serrated edges for extra grip
- Strong

WoodPeg

- Natural hardwood
- Sustainably sourced
- Soil biodegradable
- Chemical free

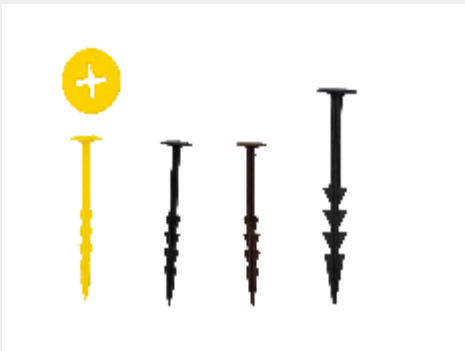


To enquire or read more about this product click [here](#)

Plastic fixing pegs are most commonly used to anchor our Covertex ground cover and rubber safety mats, particularly in children's play areas (where metal fixings may be a hazard).

Features/Benefits

- Tough and durable
- Barbed shafts for better grip
- Ideal to hold down ground cover and rubber safety mats
- Safer for children's play areas
- Yellow version available for boundary markers



To enquire or read more about this product click [here](#)



Phone: 01233 720097



Email: sales@hy-tex.co.uk



Hy-Tex (UK) Ltd
Aldington Mill, Mill Lane, Aldington,
Kent, Ashford, TN25 7AJ



Protecting The Environment Since 1991



Phone: 01233 720097



Email: sales@hy-tex.co.uk



Hy-Tex (UK) Ltd
Aldington Mill, Mill Lane, Aldington,
Kent, Ashford, TN25 7AJ





VersiWall® GP is an extremely versatile, easy-to-install and low maintenance modular vertical greening system which offers architects and developers a cost-effective solution to turn monotonous walls into aesthetically-pleasing living plant walls.

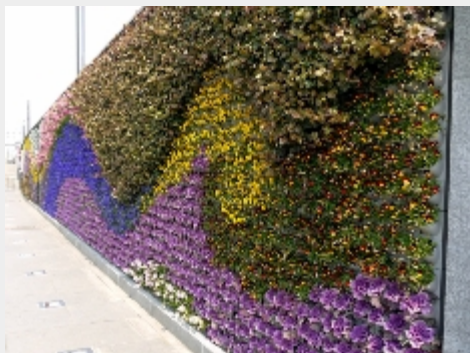


Features/Benefits

- Creates aesthetically pleasing walls
- Versatile
- Trays can be individually changed
- Easy to Install
- Possibility to create curved walls
- UV Stabilised
- Made from Recycled Plastic Meets 'Green Building' Certification
- Fire Resistant model available
- Choice of open or closed spacing

To enquire or read more about this product click [here](#)

Pixel-Garden vertical gardens offer enormous possibilities of arrangement. Small pots, like picture pixels, blend into colourful, detail-rich images. They allow you to create a variety of colour variations – flowering mosaics and elaborate floral patterns, with dramatic impact.



Features/Benefits

- Visually Pleasing
- Encourages Creativity
- Easy Installation
- Smart Irrigation
- Improved Accessibility
- Promotes Biodiversity

To enquire or read more about this product click [here](#)



Phone: 01233 720097



Email: sales@hy-tex.co.uk



Hy-Tex (UK) Ltd
Aldington Mill, Mill Lane, Aldington,
Kent, Ashford, TN25 7AJ





VertiVerd vertical green wall modules are designed as a cost effective and practical solution for domestic applications.



Features/Benefits

- Modular Design
- Budget Friendly Pricing
- Multiple Mounting Options
- Flexible Spacing
- Secure Anchorage
- Efficient Irrigation
- Easy Installation
- Simple Maintenance
- Tough and Durable

To enquire or read more about this product click [here](#)

Mesh Clips used to support weld mesh top hang vertical green walls on



Features/Benefits

- Steel mesh bracket used to support weld mesh
- Made in UK

To enquire or read more about this product click [here](#)



Phone: 01233 720097



Email: sales@hy-tex.co.uk



Hy-Tex (UK) Ltd
Aldington Mill, Mill Lane, Aldington,
Kent, Ashford, TN25 7AJ





Sediment Pollution
Control



Phone: 01233 720097



Email: sales@hy-tex.co.uk



Hy-Tex (UK) Ltd
Aldington Mill, Mill Lane, Aldington,
Kent, Ashford, TN25 7AJ





Biobrane™ Drain Guards are designed to remove sediment and oil pollution from surface water running into gully drains from surrounding construction sites, farms, industrial estates, or other areas prone to storm water pollution and cleaning operations.



Features/Benefits

- Captures oil and sediment before it enters the drain
- Holds up to 11kg of sediment
- Absorbs up to 2 litres of hydrocarbons
- Easy installation and maintenance
- Universal fit
- Compact flat pack design minimises site storage space
- Designed to be used for up to 3 months under normal conditions

To enquire or read more about this product click [here](#)

Ultra Drain Guards are designed to remove sediment and oil pollution from surface water running into gully drains from surrounding construction sites, farms, and industrial estates.



Features/Benefits

- Captures oil and sediment before it enters the drain
- Absorbs up to 3.29 litres of hydrocarbons
- Holds up to 18kg of sediment
- Easy installation and maintenance
- Universal fit
- Compact packaging means storage on site is not taken up
- Designed to be used for 3-6 months under normal conditions

To enquire or read more about this product click [here](#)



Phone: 01233 720097



Email: sales@hy-tex.co.uk



Hy-Tex (UK) Ltd
Aldington Mill, Mill Lane, Aldington,
Kent, Ashford, TN25 7AJ





Pro-Tex Drain Inlet Filters are new lightweight mats used to protect road gullies, kerb inlets and surface drains from debris, and silt laden stormwater run-off, without compromising drainage.



Features/Benefits

- Protects drains from site debris (leaves, gravel etc)
- Large sediment holding capacity
- Pre-cut 750mm x 750mm mats for quick deployment
- No need to remove grate
- Simple to maintain and quick check
- Maintain drainage to reduce risk of flooding
- Withstands heavy vehicle traffic
- Minimise risk of costly drain cleaning
- Biodegradable option available

To enquire or read more about this product click [here](#)

Biobrane™ SiltPocket™ is a lightweight, portable, compact and adaptable solution for gully erosion reinstatement, check dams, no-dig silt fence and silt traps.



Features/Benefits

- 100% Bio-Based
- Fully Compostable
- Completely Biodegradable
- Low Carbon Footprint
- Increased Efficiency
- Detains and filters passing water
- Traps eroded material
- Reduces water velocity and therefore scours erosion energy
- Encourages settlement of silt

To enquire or read more about this product click [here](#)



Phone: 01233 720097



Email: sales@hy-tex.co.uk



Hy-Tex (UK) Ltd
Aldington Mill, Mill Lane, Aldington,
Kent, Ashford, TN25 7AJ





Straw Wattles are an innovative product suitable for multiple applications, primarily silt prevention and erosion control.



Features/Benefits

- Consists of 100% agricultural grade straw
- Environmentally friendly
- Suitable for multiple applications
- Light weight and easy to handle
- Simple installation process
- Low carbon footprint
- Can be removed or left in place following establishment of vegetation

To enquire or read more about this product click [here](#)

Straw bales can be placed downstream of works to act as a barrier and may help trap suspended sediment while allowing the water to pass through the bales.



Features/Benefits

- Intercepts and detains small amounts of sediment
- Cost effective solution
- Biodegradable

To enquire or read more about this product click [here](#)



Phone: 01233 720097



Email: sales@hy-tex.co.uk



Hy-Tex (UK) Ltd
Aldington Mill, Mill Lane, Aldington,
Kent, Ashford, TN25 7AJ





Biobrane™ Pipe Socks control pollution caused when pumping dirty water from excavations, and offers an economical alternative to traditional dewatering bags or filtration products. Kindly note, our Biobrane™ Pipe Socks have superseded Pro-Tex™ Pipe Socks.

Features/Benefits



- Low cost solution
- Simple to set-up and use
- Hydrocarbon detection strip
- Ideal solution for minor pollution problems involving pumped water
- 92 micron pore filter size
- Small and compact means little disruption to surrounding people/areas
- Made from sustainable plant based bio-polymer, which is compostable and fully biodegradable

To enquire or read more about this product click [here](#)

Hy-Tex Biobrane™ Dewatering Bags provide an effective way to collect harmful sediments from dirty water pumped out of excavation works that would otherwise pollute the surrounding environment.

Features/Benefits



- Collects harmful sediment before it can enter the watercourse
- Cost effective solution
- Multiple sizes to cater for all needs
- Light, compact and easy to store
- Only requires a small working area
- 92 micron pore size
- Made from sustainable plant based bio-polymer, which is compostable and fully biodegradable

To enquire or read more about this product click [here](#)



Phone: 01233 720097



Email: sales@hy-tex.co.uk



Hy-Tex (UK) Ltd
Aldington Mill, Mill Lane, Aldington,
Kent, Ashford, TN25 7AJ





Ultra Dewatering Bags provide an effective way to collect harmful sediments from dirty water pumped out of excavation works that would otherwise pollute the surrounding environment.



Features/Benefits

- Collects harmful sediment before it can enter the watercourse
- Cost effective solution
- Multiple sizes to cater for all needs
- Light, compact and easy to store
- Only requires a small working area
- 180 micron pore size

To enquire or read more about this product click [here](#)

Pro-Tex™ HighFlow Dewatering Bags provide an effective way to collect harmful peat based sediments from dirty water pumped out of excavation works that would otherwise pollute the surrounding environment.



Features/Benefits

- Collects harmful sediment before it can enter the watercourse
- Cost effective solution
- Multiple sizes to cater for all needs
- Light, compact and easy to store
- Minimal cleaning up required
- 320 micron pore size

To enquire or read more about this product click [here](#)



Phone: 01233 720097



Email: sales@hy-tex.co.uk



Hy-Tex (UK) Ltd
Aldington Mill, Mill Lane, Aldington,
Kent, Ashford, TN25 7AJ





Pro-Tex™ HighFlow Bulk Bags provide an effective way to collect harmful sediments and sludge's from dirty water pumped out of excavation works and processing plants (such as foundations, pipe line construction, sewer and utility trenches, waterways and lakes).

Features/Benefits



- Lifting Loops in each corner
- Simple set-up
- Open top, flat bottom
- 320 micron pore size
- Small and compact meaning little disruption to surrounding people/areas
- Optional biodegradable insert filter at 81 micron

To enquire or read more about this product click [here](#)

Pro-Tex™ Vented Bulk Bags can be used for dewatering and filtering sludge. The vents allow water to drain whilst trapping sediment and debris.

Features/Benefits



- Double lifting loops in each top corner
- All sides and base vented
- Open top
- Flat bottom
- 250kg SWL 6:1SF (Safe working load with a 6:1 safety factor)
- Custom sizes and designs available

To enquire or read more about this product click [here](#)



Phone: 01233 720097



Email: sales@hy-tex.co.uk



Hy-Tex (UK) Ltd
Aldington Mill, Mill Lane, Aldington,
Kent, Ashford, TN25 7AJ





Sedimats™ are used in waterways during in-stream construction activities (such as pipe laying or dredging) to trap disturbed sediment that may pollute aquatic habitats downstream.

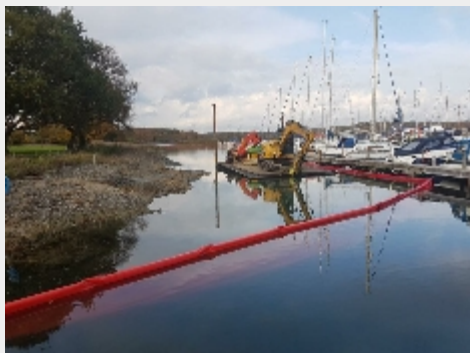


Features/Benefits

- The original silt mat with over 30 years of proven performance
- Traps sediment before it can pollute the watercourse
- Fully biodegradable
- Made from natural materials
- Secondary application - can be used to stabilise banks
- Extensive field trials in America by The New York State Electric and Gas Corporation
- Can trap up to 250kg of sediment
- Manufactured in the UK

To enquire or read more about this product click [here](#)

Pro-Tex™ Floating Silt Curtains – also known as silt nets or turbidity curtains – are designed to contain and control the dispersion of suspended solids in the water column during piling, dredging, bank re-profiling, quarrying or marine construction



Features/Benefits

- Contains and controls the dispersion of suspended solids
- Significantly and effectively reduces stress on the aquatic environment
- Improves localised settling times of suspended solids in a defined area
- Can be designed with many unique features to increase and improve their application and effectiveness

To enquire or read more about this product click [here](#)



Phone: 01233 720097



Email: sales@hy-tex.co.uk



Hy-Tex (UK) Ltd
Aldington Mill, Mill Lane, Aldington,
Kent, Ashford, TN25 7AJ





The market leading Terrastop™ silt fence range offers unrivalled performance in controlling pollution caused by silt laden construction site stormwater run-off.



Features/Benefits

- Burial depth and max silt height marker lines
- Top tying-off + tensioning ribbon
- Fibrous weft yarn provides excellent filtration (Premium)
- Proven performance
- Traps harmful silt via settlement and filtration
- Purpose designed for application
- High tensile strength
- UV Stabilised
- Non fraying reinforced edges
- High quality weave
- Exceptional balance of permeability vs filtration



The Terrastop™ Basic offers a budget option for low risk, small scale projects, with less stringent environmental requirements such as domestic use.

Hy-Tex Terrastop™ Premium silt fence, offer a proven performance and has been the market leading silt fence for over 30 years. It is practical, economic and effective method to reduce stormwater run-off pollution from such locations.



The Terrastop Highflow allows large amounts of water to pass through, whilst still trapping harmful silt pollution within the fence, typically used in wetter areas such as the Brecon Beacons and Highlands.

To enquire or read more about this product click [here](#)



Phone: 01233 720097



Email: sales@hy-tex.co.uk



Hy-Tex (UK) Ltd
Aldington Mill, Mill Lane, Aldington,
Kent, Ashford, TN25 7AJ





Terrastop™ silt fence accessories used to install and support the market leading silt fence.



Features/Benefits

Galvanised, extra large head, clout nails mostly used for our Ecofender™ newt barriers and Terrastop™ silt fences to attach posts.

- Galvanised
- Extra large head



Protective washers are used as part of the fastening system to fix a variety of Ecofender newt fence and Terrastop silt fence materials to wooden support stakes.

- Reduce risk of tearing
- Durable
- Ideal for use with clout nails



A comprehensive range of quality, competitively priced, treated softwood and chemical free hardwood timber posts. Ideal to support our Ecofender newt barrier and Terrastop silt fences.

- Machine round posts for increased strength
- Sawn timber options for economy
- FSC® options

To enquire or read more about this product click [here](#)



Phone: 01233 720097



Email: sales@hy-tex.co.uk



Hy-Tex (UK) Ltd
Aldington Mill, Mill Lane, Aldington,
Kent, Ashford, TN25 7AJ



Protecting The Environment Since 1991



Phone: 01233 720097



Email: sales@hy-tex.co.uk



Hy-Tex (UK) Ltd
Aldington Mill, Mill Lane, Aldington,
Kent, Ashford, TN25 7AJ





Ecotex™ 100 Biodegradable Tree Mats are made from the first professional grade, weed control membrane made purely from organic material that is fully compostable, has a low carbon footprint and is naturally fire resistant.

Features/Benefits



- Organic weed suppression
- Fully biodegradable
- Breaks down in 3 years or more
- Fire resistant
- Effective weed control
- No chemicals, Plastic free - made from PLA & hemp
- Strong and robust
- Low carbon footprint
- Environmentally friendly
- 0.45m x 0.45m & 0.90m x 0.90m mats available

To enquire or read more about this product click [here](#)

These tree mats are made from our Covertex™ ground cover, which is a premium grade fabric. Our Covertex™ Tree Mats provide effective weed suppression allowing newly planted trees to establish, without the competition from weeds.

Features/Benefits



- Long term weed control
- High degree of UV stabilisation (Minimum 7 year life expectancy)
- High performance & easy to use
- Superior weave quality
- Excellent drainage
- Helps maintain soil warmth
- Suppresses weeds allowing plants/trees to establish

To enquire or read more about this product click [here](#)



Phone: 01233 720097



Email: sales@hy-tex.co.uk



Hy-Tex (UK) Ltd
Aldington Mill, Mill Lane, Aldington,
Kent, Ashford, TN25 7AJ





Eco-Haven™ Original is a novel new range of biodegradable, but highly durable, protective tree guards, shrub and coppice shelters and vole guards.



Features/Benefits

- Plant Based Biopolymer
- Sustainable Solution
- Carbon Negative/Climate Positive
- Fully Biodegradable In-Situ
- Highly Durable and Robust
- Enhanced Growing Environment
- Improved Ventilation
- Low Abrasion
- Easy to Handle, Assemble and Use
- Versatile Stacking Modular System

To enquire or read more about this product click [here](#)

Eco-Haven™ Sleeve is a novel new range of economical, biodegradable hedge, vine, tree and shrub guards.



Features/Benefits

- Plant Based Biopolymer
- Sustainable Solution
- Carbon Negative/Climate Positive
- Fully Soil Biodegradable
- Highly Durable and Robust
- Enhanced Growing Environment
- Improved Ventilation
- Low Abrasion
- Easy to Handle, Assemble and Use
- Versatile Tear-Off System

To enquire or read more about this product click [here](#)



Phone: 01233 720097



Email: sales@hy-tex.co.uk



Hy-Tex (UK) Ltd
Aldington Mill, Mill Lane, Aldington,
Kent, Ashford, TN25 7AJ





Jute Tree Ties are a simple low cost and effective tree tie. Made entirely of natural fibres and fully biodegradable. Usually lasts two winter seasons unless very exposed to the weather. Wrap it around itself to make a cushion to protect the tree from rubbing.

Features/Benefits



- Supports and secures trees
- Fully biodegradable
- Low cost
- Natural Fibres
- Environmentally friendly

To enquire or read more about this product click [here](#)

We supply two types of fully biodegradable pegs, the **Eco-Peg™**, which is made using a unique bio-polymer compound; and our **WoodPeg timber "T" peg**.

Features/Benefits

Eco-Peg

- Soil Biodegradable
- Recycled polymer
- Serrated edges for extra grip
- Strong

WoodPeg

- Natural hardwood
- Sustainably sourced
- Soil biodegradable
- Chemical free



To enquire or read more about this product click [here](#)



Phone: 01233 720097



Email: sales@hy-tex.co.uk



Hy-Tex (UK) Ltd
Aldington Mill, Mill Lane, Aldington,
Kent, Ashford, TN25 7AJ





Root Barrier C3 is a highly regarded flexible, reinforced barrier designed to protect structures and services from root damage and control the spread of invasive plants such as Japanese Knotweed, Hogweed and bamboo.



Features/Benefits

- High puncture resistance (4,500N [EN ISO 12236])
- Extremely flexible
- Multiple roll sizes to cater to all needs
- CE marked
- 50 year life expectancy
- Effective barrier against Japanese Knotweed, Hogweed and other invasive weeds
- Triple coated and twin reinforced layers thermally bonded
- Tough and durable
- Passed root test (DD CEN/TS 14416:2005)

To enquire or read more about this product click [here](#)

Root Barrier Lapping Tape is a self-adhesive bitumen based membrane used to securely seal Root Barrier C3 overlaps.



Features/Benefits

- Weather and water proof
- Highly adhesive
- Tough and durable

To enquire or read more about this product click [here](#)



Phone: 01233 720097



Email: sales@hy-tex.co.uk



Hy-Tex (UK) Ltd
Aldington Mill, Mill Lane, Aldington,
Kent, Ashford, TN25 7AJ





Hycell™ is a cellular matrix of interconnecting polymer strips that form pockets to locate and strengthen the fill material. The polymer strips confine the filling material and significantly improve tensile strength.

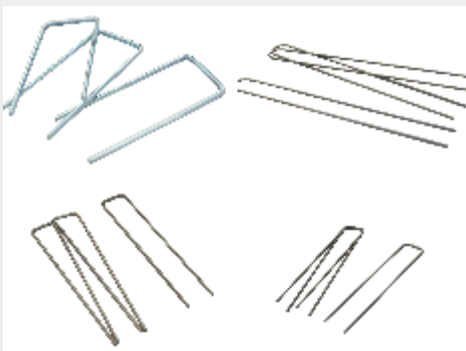


Features/Benefits

- Forms pockets to locate and strengthen the fill material
- Cellular matrix of interconnecting polymer strips
- Protects vegetation
- Makes it possible to reduce foundation stone thickness by up to 50%
- Life expectancy of 120 years
- Tested in accordance with BSEN 964-1
- Tested in accordance with BSEN ISO 13426-1-2003

To enquire or read more about this product click [here](#)

We supply a wide range of metal fixing pins to reliably anchor our fabrics and meshes in diverse ground conditions.



Features/Benefits

- Wide range of sizes and grades
- High quality steel
- 3mm & 4mm as standard
- Custom pins available
- U and J Shape
- Ribbed Rebar also available in numerous sizes.
- Large stock held

To enquire or read more about this product click [here](#)



Phone: 01233 720097



Email: sales@hy-tex.co.uk



Hy-Tex (UK) Ltd
Aldington Mill, Mill Lane, Aldington,
Kent, Ashford, TN25 7AJ



Protecting The Environment Since 1991



Phone: 01233 720097



Email: sales@hy-tex.co.uk



Hy-Tex (UK) Ltd
Aldington Mill, Mill Lane, Aldington,
Kent, Ashford, TN25 7AJ





Soil Saver™ biodegradable geo-jute erosion control meshes are widely acknowledged as the best, and most economical, solution for surface erosion control where effective vegetation will establish within two to three years.

Features/Benefits



- Protects seed and soil from stormwater run off
- Fully biodegradable
- Breaks down in 1-2 years
- Cost effective solution
- Protects seed against birds, animals and footfall traffic
- Adaptable open weave
- Environmentally friendly
- Quick and easy to install

To enquire or read more about this product click [here](#)

Hessian Bolts 10oz (273g/m²) comes in 1.37m width and typically in 125 yard bolts (114m). Used as a lightweight erosion control mat to help establish vegetation, or to provide temporary protection.

Features/Benefits



- Fully biodegradable,
- Soil retention
- Stabilises soil on embankments
- Reduces stormwater runoff
- Environmentally friendly
- Easy to install
- Cut lengths can be ordered
- 1.37m width
- Other weights available

To enquire or read more about this product click [here](#)



Phone: 01233 720097



Email: sales@hy-tex.co.uk



Hy-Tex (UK) Ltd
Aldington Mill, Mill Lane, Aldington,
Kent, Ashford, TN25 7AJ





CoirMesh™ coir erosion control blankets are open weave, pure coconut, meshes that offer the strongest and most durable natural fibre surface erosion control solutions available.



Features/Benefits

- Protects seed and soil from stormwater run off
- Fully biodegradable
- Breaks down in 3-5 years
- Protects seed against birds, animals and footfall traffic
- Adaptable open weave
- Environmentally friendly
- Quick and easy to install
- Strong and robust
- Made from coconut fibres
- Grades; 400, 700, 900 & Loop 1400

To enquire or read more about this product click [here](#)

CoirMat™ erosion control blankets are an economic solution for protection against soil and seed loss and promotion of revegetation on areas of disturbed ground



Features/Benefits

- Protects seed and soil from stormwater run off
- Fully biodegradable - dependant on grade
- Coir fibres break down in 3-5 years
- Protects seed against birds, animals and footfall traffic
- Environmentally friendly
- Quick and easy to install
- Strong and robust
- Made from coconut fibres
- Grades; 400B & TRM

To enquire or read more about this product click [here](#)



Phone: 01233 720097



Email: sales@hy-tex.co.uk



Hy-Tex (UK) Ltd
Aldington Mill, Mill Lane, Aldington,
Kent, Ashford, TN25 7AJ





GrassMat™ Supreme is a biodegradable textile, pre-sown with seed and fertilizer, which provides an easy method for effective vegetation restoration and erosion control on a wide variety of landscapes from lawns to steep slopes.



Features/Benefits

- Protects soil from stormwater run off
- Establishes vegetation on steep banks
- Fully biodegradable
- Biodegrades in 4-5 months
- Environmentally friendly
- Quick and easy to install
- Seed held in fibres to protect it against birds
- Option to customise seed mix
- Organic product

To enquire or read more about this product click [here](#)

CoirLogs are biodegradable, coconut fibre bio-rolls. Acting as a check dam they trap sediment from storm water run-off, whilst protecting and promoting restoration of wetland environments.



Features/Benefits

- Pre-drilled holes for ease of planting
- Fully biodegradable
- Environmentally friendly
- Made from coir fibres
- Protects and supports banks & shorelines
- Promotes restoration of wetland environments
- Protects banks from water scour
- Pre-planted option available for faster vegetation establishment
- Free from contaminants and satisfies environmental

To enquire or read more about this product click [here](#)



Phone: 01233 720097



Email: sales@hy-tex.co.uk



Hy-Tex (UK) Ltd
Aldington Mill, Mill Lane, Aldington,
Kent, Ashford, TN25 7AJ





The **GeoMat™** range of three dimensional, synthetic, cusped erosion control geomats are used to provide permanent reinforcement to the grass root matrix for permanent surface erosion protection.



Features/Benefits

- Long term erosion control
- Tough, yet flexible
- Promotes vegetation establishment
- Permanent protection
- Allows roots to intertwine and bind to the mat

To enquire or read more about this product click [here](#)

A three-dimensional **MultiMat™** Geomat which, due to its flexibility, is easy to place on both the bed and banks of the dry canal.



Features/Benefits

- Flexible
- Allows vegetation to anchor its roots to the three dimensional structure
- Help prevent soil erosion
- Proven history considerations

To enquire or read more about this product click [here](#)



Phone: 01233 720097



Email: sales@hy-tex.co.uk



Hy-Tex (UK) Ltd
Aldington Mill, Mill Lane, Aldington,
Kent, Ashford, TN25 7AJ





Biobrane™ SiltPocket™ is a lightweight, portable, compact and adaptable solution for gully erosion reinstatement, check dams, no-dig silt fence and silt traps.

Features/Benefits



- 100% Bio-Based
- Fully Compostable
- Completely Biodegradable
- Low Carbon Footprint
- Increased Efficiency
- Detains and filters passing water
- Traps eroded material
- Reduces water velocity and therefore scours erosion energy
- Encourages settlement of silt

To enquire or read more about this product click [here](#)

Straw Wattles are an innovative product suitable for multiple applications, primarily silt prevention and erosion control.

Features/Benefits



- Consists of 100% agricultural grade straw
- Environmentally friendly
- Suitable for multiple applications
- Light weight and easy to handle
- Simple installation process
- Low carbon footprint
- Can be removed or left in place following establishment of vegetation

To enquire or read more about this product click [here](#)



Phone: 01233 720097



Email: sales@hy-tex.co.uk

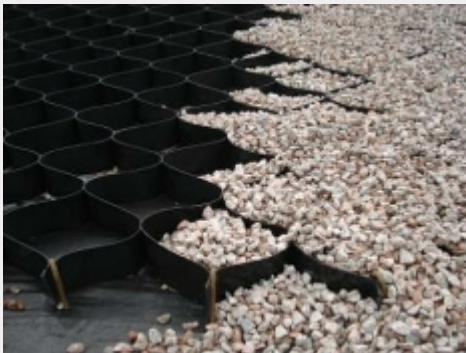


Hy-Tex (UK) Ltd
Aldington Mill, Mill Lane, Aldington,
Kent, Ashford, TN25 7AJ





Hycell™ is a cellular matrix of interconnecting polymer strips that form pockets to locate and strengthen the fill material. The polymer strips confine the filling material and significantly improve tensile strength.



Features/Benefits

- Forms pockets to locate and strengthen the fill material
- Cellular matrix of interconnecting polymer strips
- Protects vegetation
- Makes it possible to reduce foundation stone thickness by up to 50%
- Life expectancy of 120 years
- Tested in accordance with BSEN 964-1
- Tested in accordance with BSEN ISO 13426-1-2003

To enquire or read more about this product click [here](#)

CoirFence™ is a system designed for easy creation of retaining geocells, and stabilisation fencing, on embankments where top soil is vulnerable to slippage during vegetation establishment.



Features/Benefits

- Fully biodegradable geocell
- Soil retention
- Stabilises soil on embankments
- Reduces stormwater runoff
- Traps and filters sediment
- Environmentally friendly
- Easy to install

To enquire or read more about this product click [here](#)



Phone: 01233 720097



Email: sales@hy-tex.co.uk



Hy-Tex (UK) Ltd
Aldington Mill, Mill Lane, Aldington,
Kent, Ashford, TN25 7AJ





Phone: 01233 720097



Email: sales@hy-tex.co.uk



Hy-Tex (UK) Ltd
Aldington Mill, Mill Lane, Aldington,
Kent, Ashford, TN25 7AJ





Brushwood Faggots are for use in rivers, canals and lakes to trap sediment and protect the tow of the riverbanks.



Features/Benefits

- Supports CoirLogs at correct height
- Protect banks from erosion
- Fully biodegradable
- 300mm diameter
- Helps establish vegetation within water margins

To enquire or read more about this product click [here](#)

Rock Rolls have been developed for use with coir fibre rolls. In effect they act as a small, flexible and permanent gabion.



Features/Benefits

- Provides solid foundation for CoirLogs to be installed
- Creates environment for plant roots to bind to
- Long term erosion control and bank support
- Protection to toe of banks

To enquire or read more about this product click [here](#)



Phone: 01233 720097



Email: sales@hy-tex.co.uk



Hy-Tex (UK) Ltd
Aldington Mill, Mill Lane, Aldington,
Kent, Ashford, TN25 7AJ





CoirMesh™ coir erosion control blankets are open weave, pure coconut, meshes that offer the strongest and most durable natural fibre surface erosion control solutions available.



Features/Benefits

- Protects seed and soil from stormwater run off
- Fully biodegradable
- Breaks down in 3-5 years
- Protects seed against birds, animals and footfall traffic
- Adaptable open weave
- Environmentally friendly
- Quick and easy to install
- Strong and robust
- Made from coconut fibres
- Grades; 400, 700, 900 & Loop 1400

To enquire or read more about this product click [here](#)

CoirPallets are biodegradable, coconut fibre mattress substrates that work in harmony with nature, to protect and support banks, and shorelines, while promoting restoration of wetland environments.



Features/Benefits

- Fully biodegradable
- Environmentally friendly
- Made from coir fibres
- Protects and supports banks & shorelines
- Promotes restoration of wetland environments
- Protects banks from water scour
- Low detrimental impact on the environment
- Rapid return of bio-diversity
- Aesthetically pleasing finish

To enquire or read more about this product click [here](#)



Phone: 01233 720097



Email: sales@hy-tex.co.uk



Hy-Tex (UK) Ltd
Aldington Mill, Mill Lane, Aldington,
Kent, Ashford, TN25 7AJ





CoirSods are specially formed sods of compressed coir fibre which are a greener way of maintaining or improving the environment.



Features/Benefits

- Fully biodegradable
- Environmentally friendly
- Made from coir fibres
- Protects and supports banks & shorelines
- Promotes restoration of wetland environments
- Protects banks from water scour
- Free from contaminants and satisfies environmental considerations
- Low detrimental impact on the environment
- Aesthetically pleasing finish

To enquire or read more about this product click [here](#)

CoirLogs are biodegradable, coconut fibre bio-rolls. They work in harmony with nature, to protect and support banks, and shorelines, while promoting restoration of wetland environments.



Features/Benefits

- Pre-drilled holes for ease of planting
- Fully biodegradable
- Environmentally friendly
- Made from coir fibres
- Protects and supports banks & shorelines
- Promotes restoration of wetland environments
- Protects banks from water scour
- Pre-planted option available
- Free from contaminants and satisfies environmental considerations

To enquire or read more about this product click [here](#)



Phone: 01233 720097



Email: sales@hy-tex.co.uk



Hy-Tex (UK) Ltd
Aldington Mill, Mill Lane, Aldington,
Kent, Ashford, TN25 7AJ



Protecting The Environment Since 1991



Horticulture,
Agri and Equestrian



Phone: 01233 720097



Email: sales@hy-tex.co.uk



Hy-Tex (UK) Ltd
Aldington Mill, Mill Lane, Aldington,
Kent, Ashford, TN25 7AJ





Eco-Haven™ Original is a novel new range of biodegradable, but highly durable, protective tree guards, shrub and coppice shelters and vole guards.



Features/Benefits

- Plant Based Biopolymer
- Sustainable Solution
- Carbon Negative/Climate Positive
- Fully Biodegradable In-Situ
- Highly Durable and Robust
- Enhanced Growing Environment
- Improved Ventilation
- Low Abrasion
- Easy to Handle, Assemble and Use
- Versatile Stacking Modular System

To enquire or read more about this product click [here](#)

Eco-Haven™ Sleeve is a novel new range of economical, biodegradable hedge, vine, tree and shrub guards.



Features/Benefits

- Plant Based Biopolymer
- Sustainable Solution
- Carbon Negative/Climate Positive
- Fully Soil Biodegradable
- Highly Durable and Robust
- Enhanced Growing Environment
- Improved Ventilation
- Low Abrasion
- Easy to Handle, Assemble and Use
- Versatile Tear-Off System

To enquire or read more about this product click [here](#)



Phone: 01233 720097



Email: sales@hy-tex.co.uk



Hy-Tex (UK) Ltd
Aldington Mill, Mill Lane, Aldington,
Kent, Ashford, TN25 7AJ





Ecotex™ 100 Biodegradable Tree Mats are made from the first professional grade, weed control membrane made purely from organic material that is fully compostable, has a low carbon footprint and is naturally fire resistant.



Features/Benefits

- Organic weed suppression
- Fully biodegradable
- Breaks down in 3 years or more
- Fire resistant
- Effective weed control
- No chemicals, Plastic free - made from PLA & hemp
- Strong and robust
- Low carbon footprint
- Environmentally friendly
- 0.45m x 0.45m & 0.90m x 0.90m mats available

To enquire or read more about this product click [here](#)

These tree mats are made from our Covertex™ ground cover, which is a premium grade fabric. Our Covertex™ Tree Mats provide effective weed suppression allowing newly planted trees to establish, without the competition from weeds.



Features/Benefits

- Long term weed control
- High degree of UV stabilisation (Minimum 7 year life expectancy)
- High performance & easy to use
- Superior weave quality
- Excellent drainage
- Helps maintain soil warmth
- Suppresses weeds allowing plants/trees to establish

To enquire or read more about this product click [here](#)



Phone: 01233 720097



Email: sales@hy-tex.co.uk



Hy-Tex (UK) Ltd
Aldington Mill, Mill Lane, Aldington,
Kent, Ashford, TN25 7AJ





Jute Tree Ties are a simple low cost and effective tree tie. Made entirely of natural fibres and fully biodegradable. Usually lasts two winter seasons unless very exposed to the weather. Wrap it around itself to make a cushion to protect the tree from rubbing.

Features/Benefits



- Supports and secures trees
- Fully biodegradable
- Low cost
- Natural Fibres
- Environmentally friendly

To enquire or read more about this product click [here](#)

We supply two types of fully biodegradable pegs, the **Eco-Peg™**, which is made using a unique bio-polymer compound; and our **WoodPeg timber "T" peg**.

Features/Benefits

Eco-Peg

- Soil Biodegradable
- Recycled polymer
- Serrated edges for extra grip
- Strong

WoodPeg

- Natural hardwood
- Sustainably sourced
- Soil biodegradable
- Chemical free



To enquire or read more about this product click [here](#)



Phone: 01233 720097



Email: sales@hy-tex.co.uk



Hy-Tex (UK) Ltd
Aldington Mill, Mill Lane, Aldington,
Kent, Ashford, TN25 7AJ





Ecotex - The first professional grade, weed control membrane made purely from organic material that is fully compostable, has a low carbon footprint and is naturally fire resistant is now available in the UK exclusively from Hy-Tex.



Features/Benefits

- Organic weed suppression
- Fully biodegradable
- Breaks down in 3 years or more
- Fire resistant
- Plastic free
- Effective weed control
- No chemicals - made from PLA with added hemp
- Strong and robust
- Low carbon footprint
- Environmentally friendly

To enquire or read more about this product click [here](#)

Hy-Tex Covertex™ ground cover is an extremely versatile landscaping and horticultural fabric for long-term weed control, moisture conservation and separation.



Features/Benefits

- Long term weed control
- High degree of UV stabilisation (Minimum 7 year life expectancy)
- High performance & easy to use
- Superior weave quality
- Excellent drainage
- Helps maintain soil warmth
- Suppresses weeds allowing plants/trees to establish

To enquire or read more about this product click [here](#)



Phone: 01233 720097



Email: sales@hy-tex.co.uk



Hy-Tex (UK) Ltd
Aldington Mill, Mill Lane, Aldington,
Kent, Ashford, TN25 7AJ





Grass Reinforcement and Porous Paving



Ground Engineering



Landscaping and Weed Control



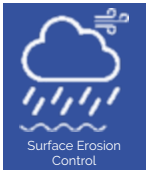
Living Walls



Sediment Pollution Control



Tree Protection



Surface Erosion Control



Water Margin Protection



Horticulture, Agri and Equestrian



Wildlife Protection

EcoStrate™ is a new lightweight, fully biodegradable, stabilised substrate designed for the hydroponic cultivation of microgreens, salads and herbs.



Features/Benefits

- Holds the optimal amount of water
- Roots are stabilised
- pH balanced
- Suitable for certified organic operations as fully compostable
- Lightweight (only 200 g/m²)
- Ready to plant, no pre-treatment required
- Custom widths available
- Easy to handle and use

To enquire or read more about this product click [here](#)

A range of Bird Nets - knitted, and extruded, monofilament nets offer effective passive protection of seeds, crops and fruit against damage caused by birds and a variety of pests.



Features/Benefits

- Protects fruit and vegetables
- High tensile strength
- UV stabilised
- Knitted, extruded and monofilament nets
- Numerous grades

To enquire or read more about this product click [here](#)



Phone: 01233 720097



Email: sales@hy-tex.co.uk



Hy-Tex (UK) Ltd
Aldington Mill, Mill Lane, Aldington,
Kent, Ashford, TN25 7AJ





Grass Reinforcement and Porous Paving



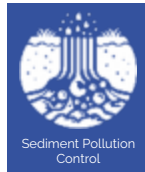
Ground Engineering



Landscaping and Weed Control



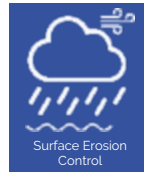
Living Walls



Sediment Pollution Control



Tree Protection



Surface Erosion Control



Water Margin Protection



Horticulture, Agri and Equestrian



Wildlife Protection

Clear, woven, and knitted, polyethylene monofilament **Insect Meshes to exclude harmful insects from greenhouses and tunnels, or to keep pollinating insects inside.**



Features/Benefits

- Effective Alternative to Pesticides
- Wide Range of Roll & Mesh Sizes
- Excellent Air Flow
- Low Shade Factor
- High Performance
- Superior Weave Quality
- Lightweight
- High Strength and Durable
- UV Stabilised

To enquire or read more about this product click [here](#)

Extruded Nets - Bird, Mole and Plant Support Nets - A diverse range of strong extruded nets and meshes for a range of applications where strength is important.



Features/Benefits

- High Strength
- Lightweight
- High Degree of UV Stabilisation
- Superior Quality
- Wide Range of Roll & Mesh Sizes

To enquire or read more about this product click [here](#)



Phone: 01233 720097



Email: sales@hy-tex.co.uk



Hy-Tex (UK) Ltd
Aldington Mill, Mill Lane, Aldington,
Kent, Ashford, TN25 7AJ





Knitted Nets - Windbreak, Shade and Hail Protection - A comprehensive range of robust knitted monofilament and tape nets and meshes for windbreak, shading and hail protection.

Features/Benefits



- High Strength
- Wide Range of Grades to suit Diverse Applications
- High Degree of UV Stabilisation
- Excellent Performance
- Superior Weave/Knit Quality
- Wide Range of Roll Sizes
- Custom Sheet Sizes also Available

To enquire or read more about this product click [here](#)

The Clearweave™ Cherry Cover System provides effective protection to cherry crops from weather damage - especially during the blossom, stoning and fruit ripening periods.

Features/Benefits



- Reduced Cracking
- Improved Yields & Quality
- Cost Effective
- Protects against frost, rain, hail and wind
- Quick to draw down
- Perfect balance between size and handling
- Low shade factor
- Tough and durable
- High degree of UV stabilisation
- Long lasting and high performance

To enquire or read more about this product click [here](#)



Phone: 01233 720097



Email: sales@hy-tex.co.uk



Hy-Tex (UK) Ltd
Aldington Mill, Mill Lane, Aldington,
Kent, Ashford, TN25 7AJ





Bayco® Equine - Horse Sight Fence & Bayco® - Polyamide Monofilament Wire



Features/Benefits

Bayco® Equine fencing wire was specially developed by Perlon to combine safety and security for horses with the strength, durability and attractiveness needed in such fences.

- High Visibility
- UV & Weather Resistant
- Resistant to Extreme Temperatures
- Does not Conduct Electric or Rust



Bayco® support wire was developed specially for applications in fruit and wine growing and greenhouse constructions.

- Grades Between 2.00mm - 6.00mm Available
- High Uniformity in Diameter
- 7 Times Lighter Than Steel
- High Linear Tenacity



Alongside the Bayco® fencing ranges, we can also supply a range of accessories to make installation and maintenance easier.

- Range of end tensioners, splices and staples
- Designed specifically for Bayco polyamide wires

To enquire or read more about this product click [here](#)



Phone: 01233 720097



Email: sales@hy-tex.co.uk



Hy-Tex (UK) Ltd
Aldington Mill, Mill Lane, Aldington,
Kent, Ashford, TN25 7AJ



Protecting The Environment Since 1991



Phone: 01233 720097



Email: sales@hy-tex.co.uk



Hy-Tex (UK) Ltd
Aldington Mill, Mill Lane, Aldington,
Kent, Ashford, TN25 7AJ





Grass Reinforcement and Porous Paving



Ground Engineering



Landscaping and Weed Control



Living Walls



Sediment Pollution Control



Tree Protection



Surface Erosion Control



Water Margin Protection



Horticulture, Agri and Equestrian



Wildlife Protection

Ecofender™ Bio is the world's first and only biodegradable, but highly durable, newt fencing. The plant based biopolymer sheet is used to temporarily exclude, or contain, newts, frogs, snakes and small wildlife - protecting them from entering hazardous areas.

Features/Benefits



- World's First Biodegradable Newt Fence
- Protects small wildlife from entering hazardous areas
- Tough for reptiles to climb
- Weather Resistant
- Sustainable Solution
- Carbon Negative/Climate Positive
- Fully Soil Biodegradable
- Made from Plant Based Biopolymer

To enquire or read more about this product click [here](#)

Ecofender™ Standard Temporary Newt Fence is tough plastic sheet used to temporarily exclude, or contain, newts, frogs, snakes and small wildlife - protecting them from entering hazardous areas (such as construction sites).

Features/Benefits



- UV Stabilised
- Protects small wildlife from entering hazardous areas
- Tough for reptiles to climb
- Weather resistant
- Conforms to 'wildlife fencing design guide' & 'great crested newt mitigation guidelines'

To enquire or read more about this product click [here](#)



Phone: 01233 720097



Email: sales@hy-tex.co.uk



Hy-Tex (UK) Ltd
Aldington Mill, Mill Lane, Aldington,
Kent, Ashford, TN25 7AJ





Grass Reinforcement and Porous Paving



Ground Engineering



Landscaping and Weed Control



Living Walls



Sediment Pollution Control



Tree Protection



Surface Erosion Control



Water Margin Protection



Horticulture, Agri and Equestrian



Wildlife Protection

Ecofender™ Woven Temporary Newt Fence is a tough plastic woven sheet used to temporarily exclude, or contain, newts, frogs, snakes and small wildlife - protecting them from entering hazardous areas (such as construction sites), and to act as a drift fence to corral and guide movement.

Features/Benefits



- UV stabilised woven barrier
- Protects small wildlife from entering hazardous areas
- Also acts as a drift fence
- Weather resistant
- Conforms to 'wildlife fencing design guide' & 'great crested newt mitigation guidelines'

To enquire or read more about this product click [here](#)

Ecofender™ Heavy-Duty Newt Fence is a tough, reinforced, plastic barrier sheet used for temporary and semi-permanent applications to exclude, or contain, newts, frogs, snakes and small wildlife - protecting them from entering hazardous areas (such as construction sites).

Features/Benefits



- Heavy-Duty Reinforced Membrane
- UV Stabilised
- Protects Newts, Amphibians, Reptiles and Wildlife from Entering Hazardous Areas
- Tough for Reptiles to Climb
- Weather Resistant
- Conforms to 'Wildlife Fencing Design Guide' & 'Great Crested Newt Mitigation Guidelines'

To enquire or read more about this product click [here](#)



Phone: 01233 720097



Email: sales@hy-tex.co.uk



Hy-Tex (UK) Ltd
Aldington Mill, Mill Lane, Aldington,
Kent, Ashford, TN25 7AJ





Grass Reinforcement and Porous Paving



Ground Engineering



Landscaping and Weed Control



Living Walls



Sediment Pollution Control



Tree Protection



Surface Erosion Control



Water Margin Protection



Horticulture, Agri and Equestrian



Wildlife Protection

Ecofender™ SP1 Semi-Permanent Newt Fences (1mm) is a budget option designed for semi-permanent applications requiring a life expectancy of up to 5 years and where there is a medium level risk of human disturbance.



Features/Benefits

- UV stabilised
- Up to 5 years life expectancy
- Flat sheet creased 50mm from top and 100mm from base
- Protects newts, frogs and reptiles
- Made from recycled plastic
- Non-toxic and chew resistant
- Low thermal expansion makes it less vulnerable to distortion during hot weather
- Help contribute towards your BREEAM score
- Reusable

To enquire or read more about this product click [here](#)

Ecofender™ P3 - Permanent Newt Panel - A permanent, or long-term, fencing system for newts, other amphibians, reptiles and small mammals.



Features/Benefits

- UV stabilised
- Up to 15 years life expectancy
- Flat panel creased 50mm from top and 100mm from base
- Protects newts, frogs and reptiles from entering hazardous areas
- Made in the UK
- Made from recycled plastic
- Non toxic and chew resistant
- Help contribute towards your BREEAM score
- Reusable

To enquire or read more about this product click [here](#)



Phone: 01233 720097



Email: sales@hy-tex.co.uk



Hy-Tex (UK) Ltd
Aldington Mill, Mill Lane, Aldington,
Kent, Ashford, TN25 7AJ





Grass
Reinforcement and
Porous Paving



Ground
Engineering



Landscaping and
Weed Control



Living Walls



Sediment Pollution
Control



Tree Protection



Surface Erosion
Control



Water Margin
Protection



Horticulture,
Agri and Equestrian



Wildlife Protection

The **ACO wildlife range** of permanent guidance fences, road tunnels and stop grids provide effective long term solutions for the protection of frogs, toads and newts where their migratory routes cross roads.



Features/Benefits

- Heavy-Duty Permanent Solutions
- Protection and enhancement for wildlife
- Prevents small animals from reaching the roadway or other dangerous areas.
- Multiple Systems to guide small animals

To enquire or read more about this product click [here](#)

Ecofender™ Elite Permanent Amphibian & Reptile Guidance Barrier is a robust heavy-duty panel for permanent exclusion and mitigation projects. It has a dual lip barrier and different heights to safeguard a variety of wildlife.



Features/Benefits

- Robust Material
- Dual Lip Barrier
- Can be Used as Retaining Wall
- Extremely Durable
- Weather Resistant
- Requires no Material Maintenance
- 100% Recycled and Recyclable Plastic
- Non-Toxic and Harmless to Flora and Fauna
- Simple Installation
- Easy to Work with if Cutting, Screwing or Drilling

To enquire or read more about this product click [here](#)



Phone: 01233 720097



Email: sales@hy-tex.co.uk



Hy-Tex (UK) Ltd
Aldington Mill, Mill Lane, Aldington,
Kent, Ashford, TN25 7AJ





Grass Reinforcement and Porous Paving



Ground Engineering



Landscaping and Weed Control



Living Walls



Sediment Pollution Control



Tree Protection



Surface Erosion Control



Water Margin Protection

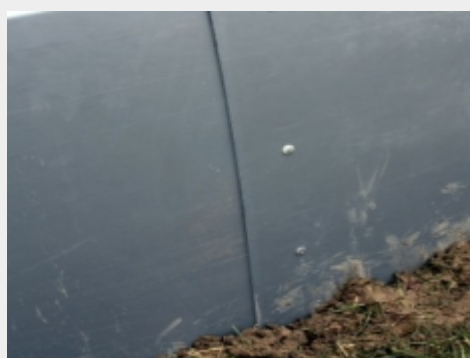


Horticulture, Agri and Equestrian



Wildlife Protection

Ecofender™ Water Vole Fence Panels are designed to prevent water voles from entering construction sites.



Features/Benefits

- UV Stabilised
- Up to 15 Year Life Expectancy
- Flat Sheet
- Made in the UK
- Made from Recycled Plastic
- Non Toxic and Chew Resistant
- Low Thermal Expansion
- Less Vulnerable to Distortion during Hot Weather
- Helps Contribute Towards your BREEAM Score
- Reusable

To enquire or read more about this product click [here](#)

Ecofender™ Snake Fences are taller versions of our newt barriers which are designed to keep grass snakes and other small reptiles out of the dangers construction sites may pose.



Features/Benefits

- UV Stabilised
- 1.20m+ tall barriers
- 3 grades with life expectancies from 3 to 7 years
- Protects Amphibians and Reptiles from Entering Hazardous Areas
- 1mm, polythene and woven grades available

To enquire or read more about this product click [here](#)



Phone: 01233 720097



Email: sales@hy-tex.co.uk



Hy-Tex (UK) Ltd
Aldington Mill, Mill Lane, Aldington,
Kent, Ashford, TN25 7AJ





Grass Reinforcement and Porous Paving



Ground Engineering



Landscaping and Weed Control



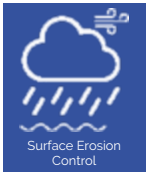
Living Walls



Sediment Pollution Control



Tree Protection



Surface Erosion Control



Water Margin Protection



Horticulture, Agri and Equestrian



Wildlife Protection

Ecofender™ Wildlife Accessories used to install and support the Ecofender™ fences.

Features/Benefits



Galvanised, extra large head, clout nails mostly used for our Ecofender™ newt barriers and Terrastop™ silt fences to attach posts.

- Galvanised
- Extra large head



Protective washers are used as part of the fastening system to fix a variety of Ecofender newt fence and Terrastop silt fence materials to wooden support stakes.

- Reduce risk of tearing
- Durable
- Ideal for use with clout nails



A comprehensive range of quality, competitively priced, treated softwood and chemical free hardwood timber posts. Ideal to support our Ecofender newt barrier and Terrastop silt fences.

- Machine round posts for increased strength
- Sawn timber options for economy
- FSC® options

To enquire or read more about this product click [here](#)



Phone: 01233 720097



Email: sales@hy-tex.co.uk



Hy-Tex (UK) Ltd
Aldington Mill, Mill Lane, Aldington,
Kent, Ashford, TN25 7AJ





Grass Reinforcement and Porous Paving



Ground Engineering



Landscaping and Weed Control



Living Walls



Sediment Pollution Control



Tree Protection



Surface Erosion Control



Water Margin Protection



Horticulture, Agri and Equestrian



Wildlife Protection

Ecofender™ Wildlife Accessories used to install and support support the Ecofender™ fences.

Features/Benefits

Self Drilling Screws. Hex head with integrated washer. Mostly used for our Ecofender™ newt barriers and Terrastop™ silt fences to attach posts.

- Size 5.5 x 38mm.
- Hex head with integrated washer
- Washer compresses making the hole watertight.
- Fast installation
- 100 per pack.



Ecofender™ Refuge Tiles create the ideal environment for amphibians and reptiles to shelter under.

- Tough and durable
- Recycled
- Resist wind displacement



Stackable circular and rectangular plastic buckets for pitfall trap use. Comes with plastic/steel handle and resealable lid.

- Wide range of sizes and shapes
- Optional mammal ladders and floats also available



To enquire or read more about this product click [here](#)



Phone: 01233 720097



Email: sales@hy-tex.co.uk



Hy-Tex (UK) Ltd
Aldington Mill, Mill Lane, Aldington,
Kent, Ashford, TN25 7AJ

